

N McCullough

MECHANICAL CALIPER LOG

FILING NO.

HMC-93667

COMPANY E. G. & G. - BOYLES BROTHERS

WELL INEL CORE HOLE # 2A

FIELD INEL TEST SITE

COUNTY BUTTE STATE IDAHO

LOCATION

INEL TEST SITE

OTHER SERVICES:

SEC. TWP. RGE.

ELEVATIONS:

PERMANENT DATUM	GL	ELEV.
LOG MEASURED FROM	GL	
DRILLING MEASURED FROM	GL	
DATE	9-22-78	
RUN NO.	ONE	
TYPE LOG	MECHANICAL CALIPER	
DEPTH-DRILLER	3000'	
DEPTH-LOGGER	2640'	
BOTTOM LOGGED INTERVAL	2640'	
TOP LOGGED INTERVAL	1900'	
TYPE FLUID IN HOLE	MUD	
SALINITY PPM CL.		
DENSITY LB./GAL.		
LEVEL	238'	
MAX. REC. TEMP. DEG. F.	102°	
OPR. RIG TIME	45 MINUTES	
RECORDED BY	WILSON	
WITNESSED BY	MR. HARRINGTON	

RUN		BORE HOLE RECORD				CASING RECORD			
NO.	BIT	FROM	TO	SIZE	WGT.	FROM	TO		
1				3"	7.57#	0	1936'		

THIS HEADING AND LOG CONFORMS TO API RECOMMENDED STANDARD PRACTICE RP-33 (P)

FOLD HERE

EQUIPMENT DATA

MECHANICAL CALIPER LOG

RUN NO.	ONE	RUN NO.	
TOOL MODEL NO.		LOG TYPE	
DIAM.	2"	TOOL MODEL NO.	
DETECT. MODEL NO.		DIAM.	
TYPE		DETECT. MODEL NO.	
LENGTH		TYPE	
		LENGTH	
		SOURCE MODEL NO.	
		SERIAL NO.	
		SPACING	
HOIST TRUCK NO.	1218	TYPE	
INST. TRUCK NO.	1218	STRENGTH	
TOOL SERIAL NO.			
LOG TICKET NO.	11671		

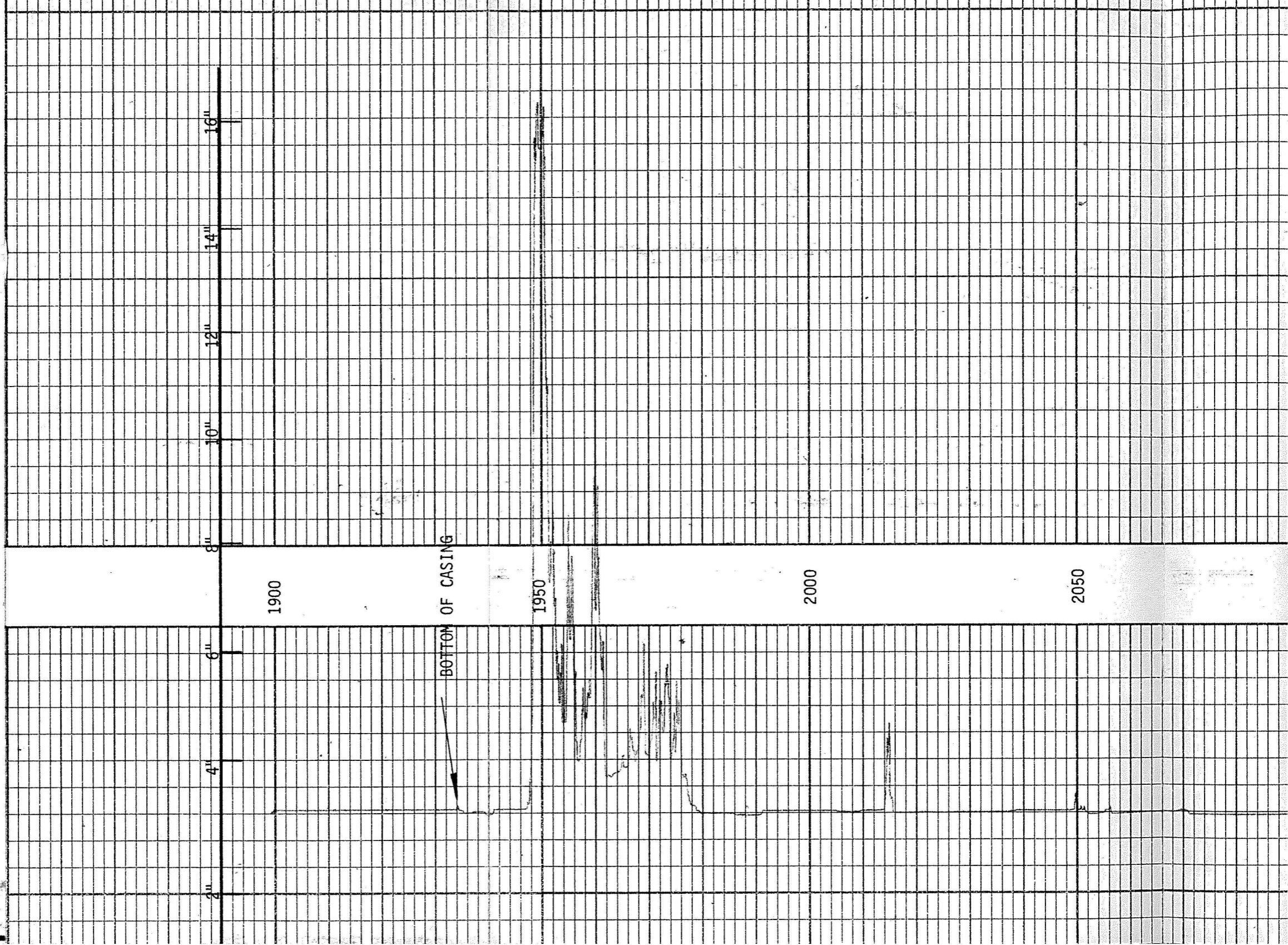
LOGGING DATA

GENERAL		SPEED		T. C.		SENS.		ZERO		API GR.	
RUN NO.	DEPTHS FROM TO	FT./MIN.	SEC.	SEC.	SETTINGS	DIV. L. OR R.	DIV. L. OR R.	PER LOG DIV.	PER LOG DI	PER LOG DI	PER LOG DI
1	2640' 1900'	30									

REFERENCE LITERATURE:

REMARKS:

FOLD HERE



4"

4"

6"

8"

10"

12"

14"

16"

1900

BOTTOM OF CASING

1950

2000

2050

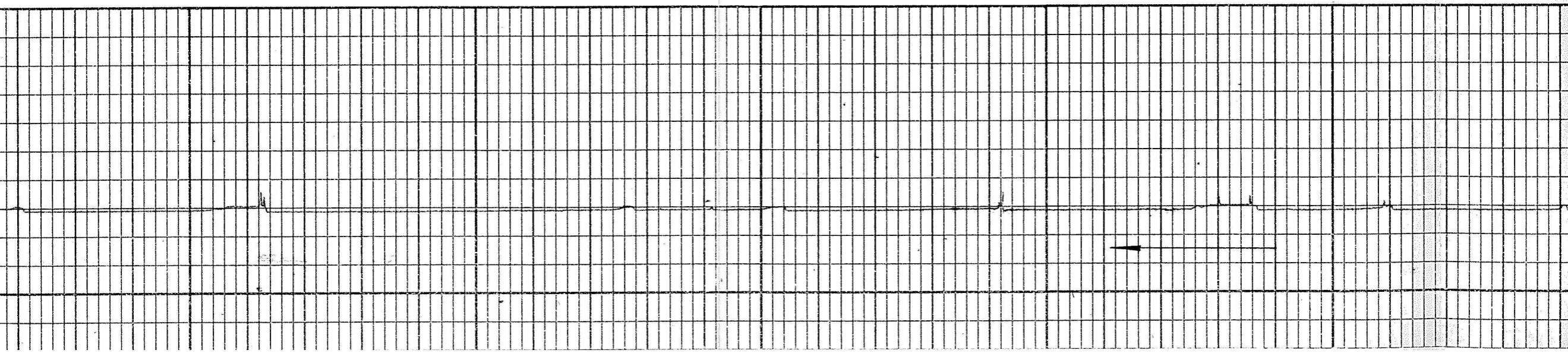
2100

2150

2200

2250

2300



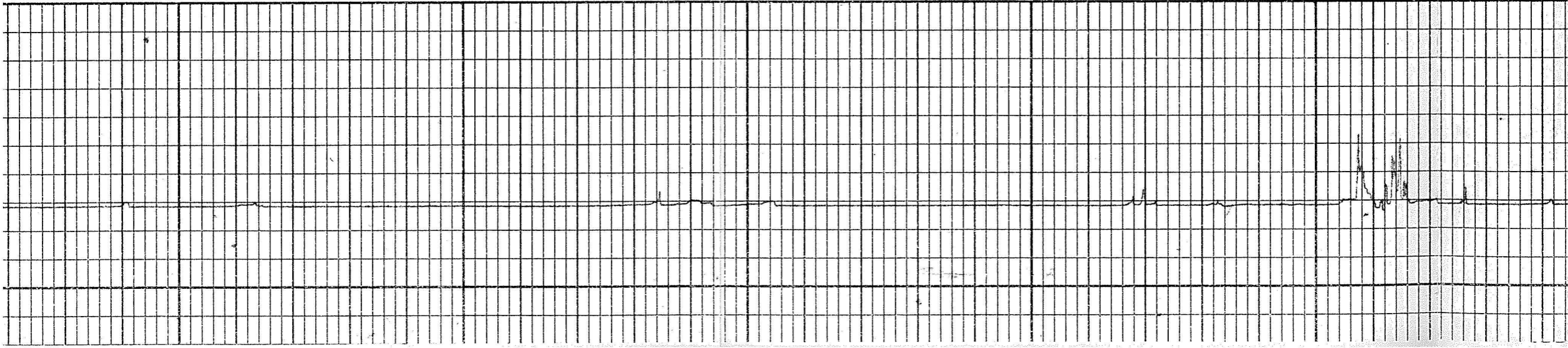
2350

2400

2450

2500

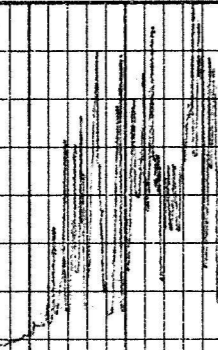
2550



2600

2 4 6

8 10 12 14 16



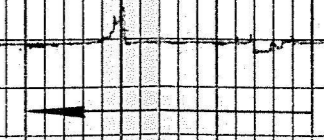
LOG BOTTOM ~ 2640'

E, G, & G. - BOYLES BROTHERS
 INEL CORE HOLE #2A
 INEL TEST SITE FIELD
 BUTTE COUNTY, IDAHO

REPEAT SECTION

2450

2500



2550

2600

13/10